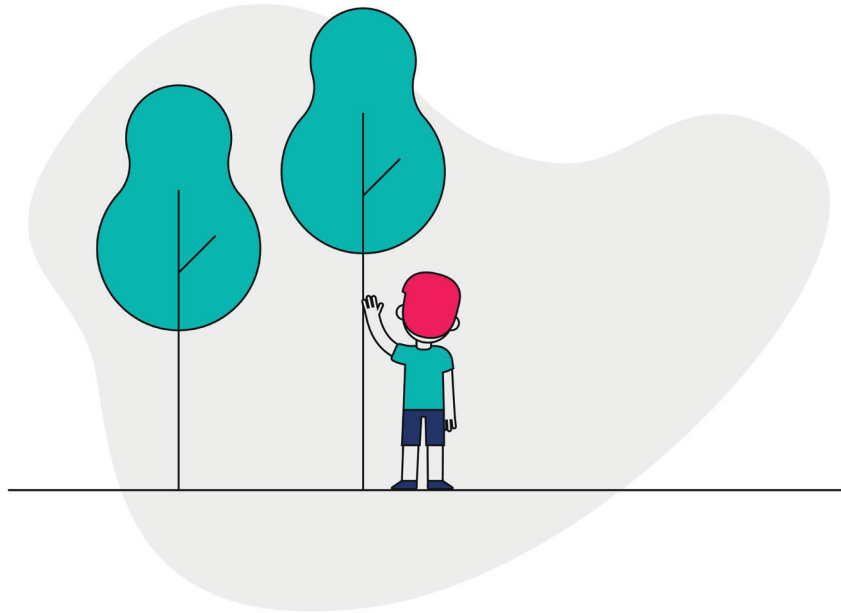




How Tall Is That Tree?

Trigonometry is a branch of maths that relies on the relationships between the angles and sides of triangles. This activity uses trigonometry to estimate the heights of tall objects, by making a simple tool that can measure angles.



Key Stage THREE	Age 11-14	Learning Maths, geometry, making observations, curiosity	Time 30 mins	Difficulty HARD
Materials protractor template, A4 paper, A6 paper, measuring tape, scissors, sticky tape or glue, hole punch, 50cm of string, Metal washer, large button, keyring with something on it, or other small weight that can be tied with string				Teacher Pack NO
Links Click to open document Credit: Science Museum Group				