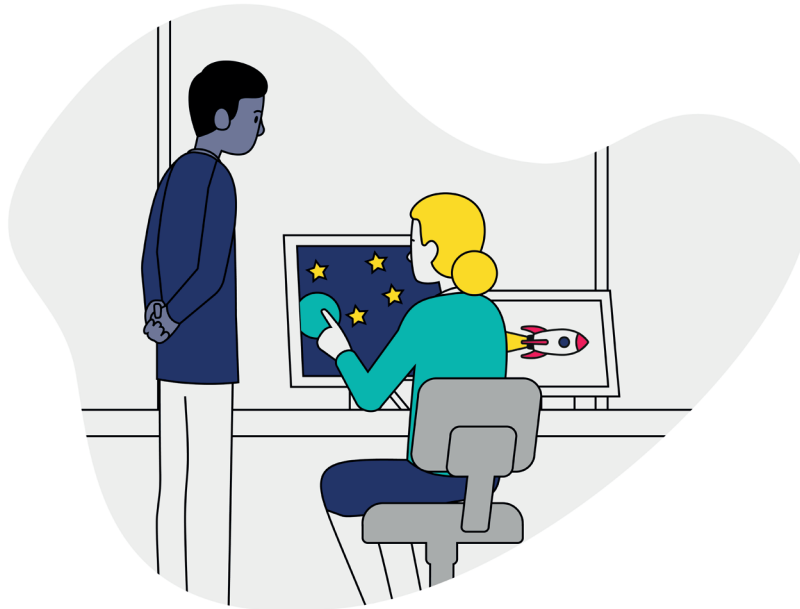


Pictures from Space

The International Space Station (ISS) has been occupied for over 20 years. Including a stint from our UK astronaut Tim Peake in 2015. The ISS regularly passes over the UK as it is held in a low earth orbit, 220 miles above the earth. It can regularly be seen in the night sky passing over at 17,227 mph!

As the ISS passes it also transmits radio for enthusiasts to receive from Earth. Pictures are transmitted over radio using a format known as Slow Scan Television (SSTV). These pictures can be received on earth and viewed on your computer.



Key Stage THREE	Age 12-14	Learning Radio, Physics, Space	Time 1 hour	Difficulty HARD
Materials A computer with an internet connection				Teacher Pack NO
Links Learn more about the ISS and how you can spot it in the sky here: https://spotthestation.nasa.gov/ Learn how you can pick up SSTV signals here: https://www.esa.int/ESA_Multimedia/Videos/2020/07/How_to_get_pictures_from_the_International_Space_Station_via_amateur_radio#.Xxk8tSp8acc.link				